

## We are The Aquifer Partnership

We are protecting the precious water held beneath our feet. The chalk stores it. We pump it. We use it. From towns to downs we all rely on it. Now, next year, in the next decade and in the next century, we'll always need it. TAP is safeguarding the water we'll need for years to come.

At the core of TAP are professionals who love water.



## The project

From the River Adur in the west, the River Ouse to the east, and up to the edge of the Downs, the land is shaped by a tremendous block of chalk. This chalk holds water like a sponge in an aquifer.

This is the water that makes the journey to your home, ready at the turn of a tap to quench a thirst, cook a meal, wash a muddy kit or fill a paddling pool. It's a vital natural resource.

But like so many others, this natural resource is under threat. Pollution is a problem, not just here, but for aquifers, rivers, lakes and oceans the world over. A growing population increases the pressure on our shared water.

TAP is bringing people together to protect our aquifer.



# “No water, no life. No blue, no green” - Sylvia Earle

## What we do

### On the downs

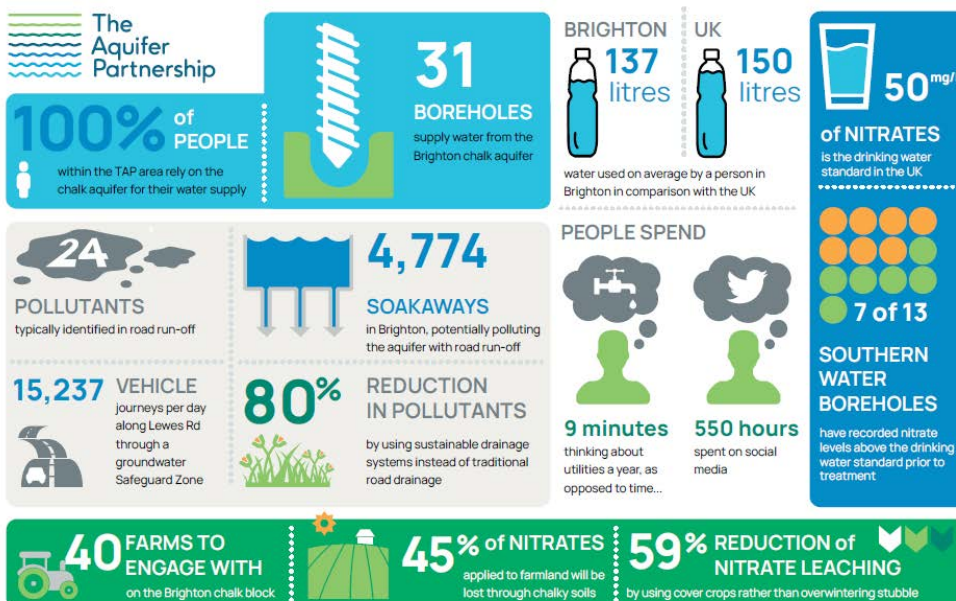
Farming and sports turf management affects the water we all rely on. In these thin chalky soils 45% of fertiliser will be lost to the atmosphere or leached through the soil, with nitrate finding its way to the groundwater. Southern Water technicians have detected rising levels of nitrate at two thirds of their boreholes, with seasonal peaks as autumn and winter rains increase leaching.

TAP is working with **farmers and land managers** to establish groundwater friendly techniques, such as using fertiliser more efficiently and introducing additional crops to take up any excess nitrate. Less fertiliser is lost through leaching, reducing pollution to the aquifer and saving money.

### In the towns

We're facing unprecedented times with climate change and population increase set to put increasing strain on our water resources. Ensuring development is climate friendly will also help to ensure it is groundwater friendly.

TAP works with **local authorities** and **schools** to create **rainscapes**, harnessing nature to ensure towns are more resilient to flooding and groundwater is protected from potential pollution.



## What you can do

### Reduce your use

With a growing population pressure on our aquifer increases. Every drop counts. Around Brighton each person uses on average 136l a day. Can you reach **Target 100**?

### Ditch the car

We all know cars cause air pollution, but did you know that road run-off is the third highest cause of water pollution in the UK?

### Water friendly gardens

Be kind to nature and the aquifer by not using pesticides and artificial fertilisers in your garden or allotment. Harvest rain in a water butt to water your plants, and think about creating your own **raingarden**!

### Aquifer champions

Groundwater is a poor relation in comparison to rivers, lakes and the oceans. But it's just as vital and just as fascinating too. Help us to tell everyone about the aquifer – it's there, it's vital for life, and it needs our help.

Talk to us.

Discover with us.

Join us.

[wearetap.org.uk](http://wearetap.org.uk)